

NOTES:

1) PROVIDE PLATE WASHERS UNDER ALL HEADS AND NUTS BEARING ON WOOD EXCEPT WHERE SPECIFICALLY NOTED ON DRAWINGS.

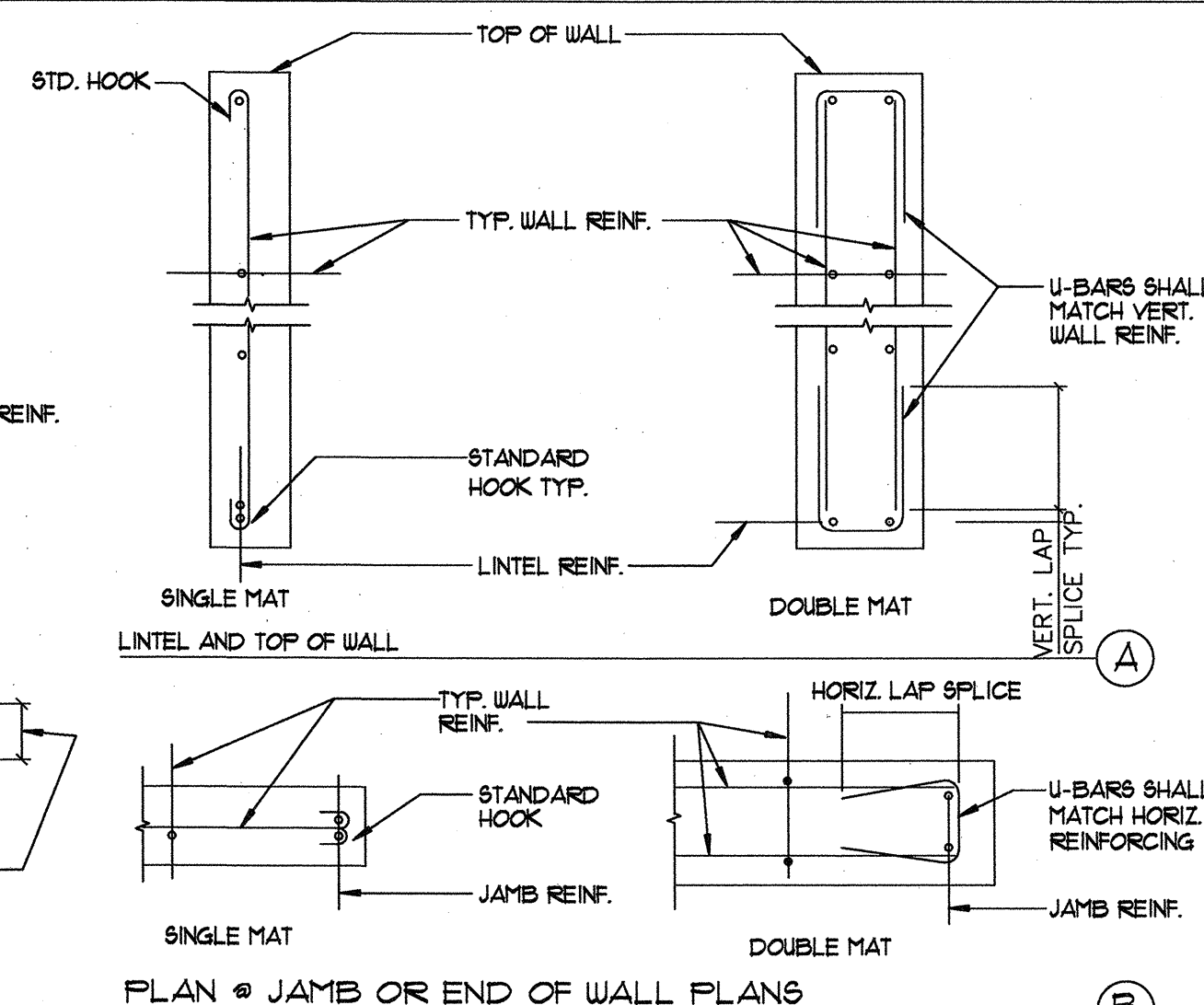
8

-
- FRAMING MEMBER
SEE PLAN
- 1
- 2
- 3
- 4
- 5
- 6
- BOUNDARY OF DIAPHRAGM
SEE PLAN FOR SPECIFIC
CONDITIONS

9

LINTEL REINFORCING
 2-#4 FOR OPENINGS LESS THAN 5'-0"
 2-#5 FOR OPENINGS 5'-0" TO 7'-0"
 LINTEL REINFORCING
 WHERE EXTENSION IS NOT POSSIBLE EXTEND BARS AS FAR AS POSSIBLE AND HOOK - TYP.
 LINTEL REINFORCING
 2-#4 JAMB REINF. TYP.
 VERT. LAP SPLICE
 STANDARD END HOOK WHERE MINIMUM EMBEDMENT IS NOT POSSIBLE
 24" MIN. TYP.
 24" MIN. TYP.
 PANELS TO MATCH JAMB REINF. - TYP.
 SEE PLAN FOR TYPICAL WALL REINF.
 2-#4
 FLOOR LINE
 48 BAR DIAMETERS
 JAMB REINF. TO EXTEND FLOOR TO FLOOR OR FLOOR TO ROOF WHERE OPENING WIDTH EXCEEDS 4'-0"
 ELEVATION

13



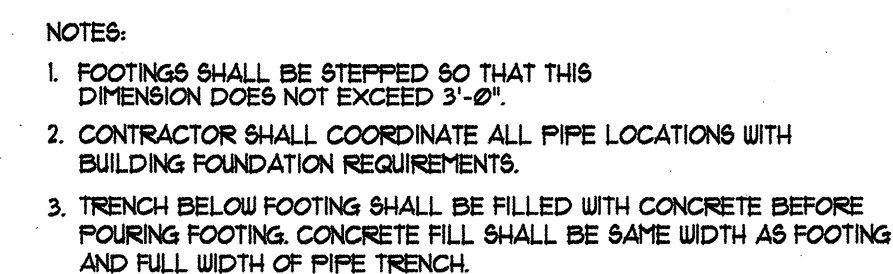
5

⑥

| MARK | EDGE NAILING (EN) | BILL PL. | 3/4" | 1/8" | BILL PL BOLTING | SHEAR VALUE, PLF | EDGE MEMBER | REMARKS | TEST PANEL |
|------|-------------------------|-------------|--|----------------------------------|--------------------|---------------------|----------------|--------------------------------------|---------------|
| | | | FLYWOOD SUBFLOOR | FLYWOOD SUBFLOOR | | | | | |
| 1 | 6" | 2x | 16d @ 6" | 20d @ 6" | 36" | 340 | 3x | | |
| 2 | 4" | 4x | 10" x 5 5/8" SCREW @ 8" O.C. | 10"x6" SCREW @ 8" O.C. | 24" | 510 | 4x | | |
| 3 | 3" | 4x | 10" x 5 5/8" SCREW @ 5" O.C. | 10"x6" SCREW @ 5" O.C. | 16" | 665 | 4x | STAGGERED EN. | |
| 4 | 4", 4" | 4x | 10" x 5 5/8" SCREW @ 3" O.C. | 10"x6" SCREW @ 3" O.C. | 12" | 1020 | 4x | SHEATH BOTH FACES, STAGGER EN. | REQUIRED |
| 5 | 3", 3" | 4x | 10" x 5 5/8" SCREW @ 2 1/2" O.C. | 10"x6" SCREW @ 2 1/2" O.C. | 9" | 1320 | 4x | SHEATH BOTH FACES, STAGGER EN. | REQUIRED |

- NOTES FOR RETROFIT AND REMODEL:**
1. BOLT SHALL BE 5/8" DIAMETER THREADED ROD IN SIMPSON SET-XP EPOXY WITH EXISTING ANCHOR BOLTS TO BE REMOVED. EPOXY, AT CENTERLINE OF SILL PL., 1 3/4" EDGE DISTANCE. (CSO ESR-2556, ACR 25744)
 2. EXISTING ANCHOR BOLTS MAY BE UTILIZED WITH NEW EPOXY ANCHORS TO ACHIEVE THE REQUIRED SILL PL. BOLTING. MAINTAIN 1 1/2" MINIMUM SPACING.
 3. SPECIAL INSPECTION IS REQUIRED ON ALL EPOXY BOLTING.

⑦



①

TYP. SLAB ON GRADE REINF.
 3" @ 18" O.C.
 3" @ 18" O.C.
 FIN. GRADE OR SLAB SEE PLANS
 2" x 4" CONT.
 16" MIN.
 1/2" MIN.
 1 1/2" CLR.
 3/4" x 3" CONT. KEY
 BLDG. WALL OR CHEEK WALL
 TYP. WALL REINF. AT CHEEK WALL
 CLASS. B LAP SPLICE
 BOTTOM BAR
 DOUELS @ 16" O.C. @ CENTERLINE OF SLAB TO MATCH SLAB
 SECTION

NOTES:
 1. WHERE CHEEK WALL IS REQUIRED FROM TOP OF THICK CONCRETE/BLOCK WALL WITH 4" VERT. AT 16" AND 4" HORIZ. AT 16".
 2. SEE ARCH. DRAWINGS FOR ADDITIONAL INFORMATION.
 3. CONTRACTOR SHALL PROVIDE ADEQUATE BRACING FOR WALL DURING BACKFILLING. BRACING SHALL REMAIN IN PLACE UNTIL STAIR CONCRETE HAS ATTAINED FULL STRENGTH.

②

A) TIE OR STIRRUP

B) PRINCIPAL REINFORCING

C) MAXIMUM OFFSET BEND

D) UPPER LAYER

E) LOWER LAYER

F) VERTICAL BAR CLEARANCE

NOTE:
ALL BAR BENDS SHALL BE MADE COLD

③

The image contains two technical drawings of concrete block wall intersections and corners, showing reinforcement details.

Top Drawing: 12" CONCRETE BLOCK

- Left Section:** Shows a vertical wall section with "2 - VERT. BARS" and "HORIZ. LAP SPICE".
- Right Section:** Shows a corner or intersection with "2 - VERT. BARS", "HORIZ. LAP SPICE TYP.", "OPEN END BLOCK", and "BREAK FACE SHELLS FOR FLOW OF GROUT".

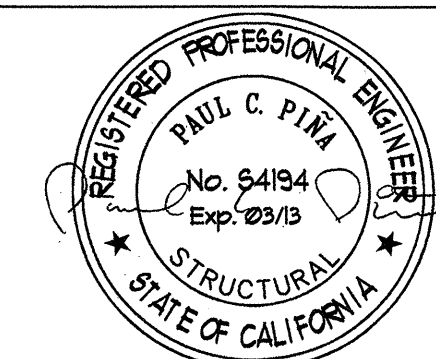
Bottom Drawing: 8" CONCRETE BLOCK


- Left Section:** Shows a vertical wall section with "2 - VERT. BARS", "HORIZ. LAP SPICE", and "ALTERNATE BENDS TYP.". Below this section is the label "INTERSECTION".
- Right Section:** Shows a corner with "2 - VERT. BARS", "HORIZ. LAP SPICE TYP.", "OPEN END BLOCK", and "BREAK FACE SHELL FOR FLOW OF GROUT". Below this section is the label "CORNER".

NOTE: ALL SPICES SHALL BE 48 BAR DIAMETERS.

4

NO SCALE



| NO. | ISSUED FOR | DATE |
|---|-----------------------|----------|
| | PLAN CHECK | 8/8/11 |
| | PLAN CHECK | 10/18/11 |
| | PLAN CHECK | 5/29/12 |
|  | BASEMENT EXTENSION | 5/30/12 |
| | | |
| | | |

RESIDENCE ADDITION
217 SOUTH McCADDEN PLACE
LOS ANGELES CA 90004

| |
|-------------------|
| JOB NUMBER |
| S2207 |
| DRAWN BY |
| CADpros |
| CHECKED BY |
| PCP |

S0.2